

DIMEX BASE

SETUP GUIDE

*Schäf Systemtechnik GmbH
Falkenstrasse 22
D-91580 Petersaurach
Germany
Phone: +49 (0) 9872 2002
Fax: +49 (0) 9872 2823
E-Mail: support@sstmed.com*

TABLE OF CONTENTS

License Agreements	3
Disclaimer.....	3
Copyright.....	4
Hotline, Online-Support and Manual	4
Revision History.....	5
Audience	5
Definitions, Terms and Abbreviations.....	5
General.....	6
Functionality.....	6
System Requirements	6
Main User Interface	7
Configuration	8
Worklist Settings	9
Import	10
Export.....	11
General.....	12

LICENSE AGREEMENTS

DISCLAIMER

1. In no event Schäf Systemtechnik GmbH be liable for any damage or loss arising from fire, earthquake, any action or accident by a third party, any international or negligent action by the user, any trial usage, or other usage under abnormal conditions.
2. In no event will Schäf Systemtechnik GmbH be liable for direct or indirect consequential damage arising out of the use or unavailability of this product.
Schäf Systemtechnik GmbH will not be liable for loss of image data due to any reason.
3. In no event shall Schäf Systemtechnik GmbH be liable for personal physical harm or property damage ths is sustained when the instructions are not followed or the product is misused.
4. It is the responsibility of the attending physicians to provide medical care services. Schäf Systemtechnik GmbH will not be liable for the faulty diagnosis.
5. Roentgenography, image processing, image reading, and image data storage must be performed in accordance with the laws of the country or region in which the product being used.
The user is responsible for maintaining the privacy of the image data.
6. Information in this manual may change without prior notice.
7. We've taken all possible means to ensure the content accuracy of this manual. If you have any questions or problems, contact your local dealer.

COPYRIGHT

1. All rights reserved.
2. Under copyright laws, this manual may not be reproduced, in whole or in part, without the written permission of Schäf Systemtechnik GmbH.

HOTLINE, ONLINE-SUPPORT AND MANUAL

If you have further questions about usage and/or functionality of this software product, then please feel free to contact our service personal.

Phone-Hotline +49 (0) 9872 / 2002

Fax-Hotline +49 (0) 9872 / 2823

Internet address:

<http://www.sstmed.com>

service@sstmed.com

REVISION HISTORY

- Revision 1.0 Rossel 2011-11-17 Draft for official review

AUDIENCE

This document is intended for health system integrators or implementers.

DEFINITIONS, TERMS AND ABBREVIATIONS

- AE Application Entity
- CR Computed Radiography
- DICOM Digital Imaging and Communications in Medicine
- MG Mammography
- SCP Service Class Provider
- SCU Service Class User
- TCP/IP Transmission Control Protocol
- UID Unique Identifier

GENERAL

FUNCTIONALITY

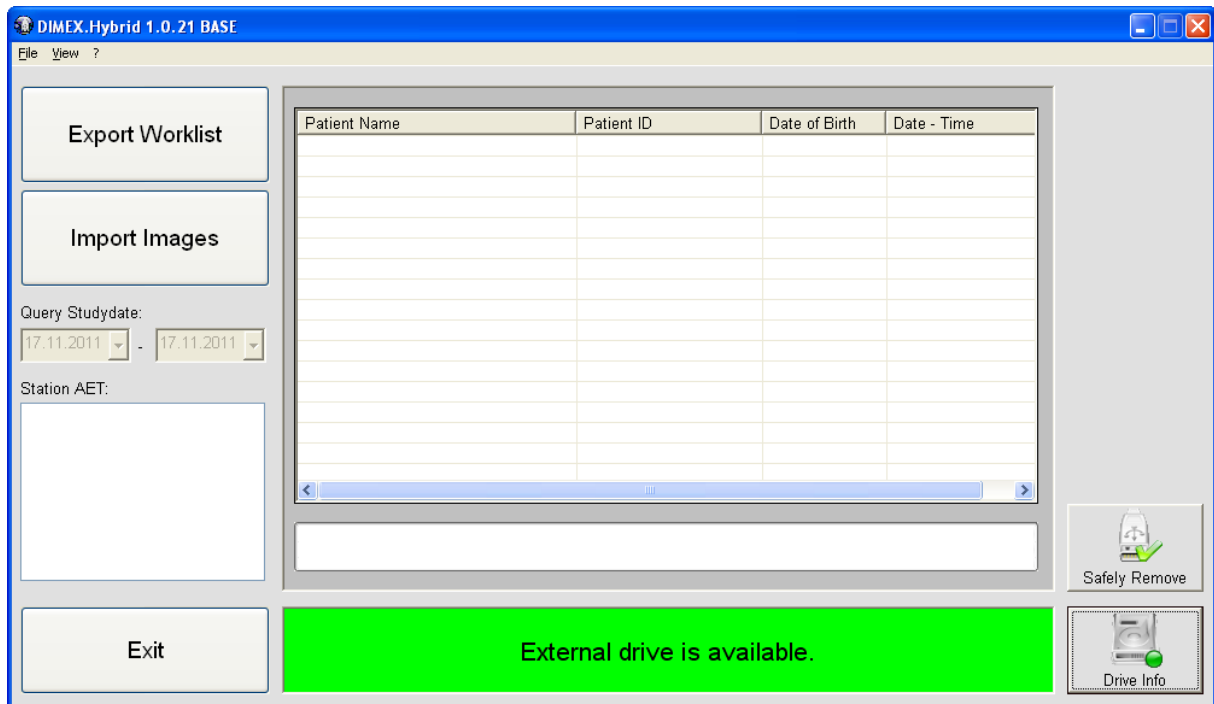
- DICOM Worklist SCU
- DICOM Store
- DICOM Send
- GDT Worklist Export/Import
- File encryption/decryption

SYSTEM REQUIREMENTS

The software supports the following operation systems:

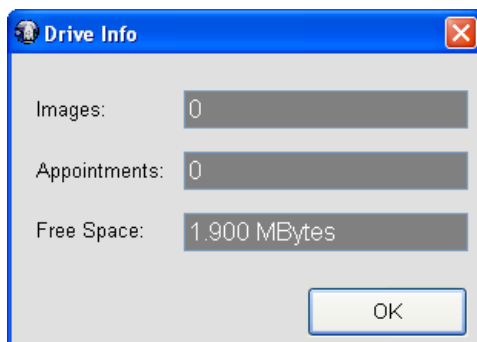
- Microsoft Windows 2000/XP Professional
- Microsoft Windows 7 32-Bit Professional

MAIN USER INTERFACE



Export Worklist	Queries the configured worklist and shows the retrieved data in the list. The retrieved data will be automatically written on the USB device.
Import Images	Reads the available images on the USB device and sends it to the configured PACS/Dicom node. The current progress will be shown in the list frame.
Query Studydate	Set the used time range for the worklist query.
Station AET	Set the used Local AET for the worklist query.
Safely Remove	Removes the configured USB device safely from the windows os.
Drive Info	Shows a simple overview of the content and free space left on the USB device (see image drive info).
Status window	Shows the status of the USB device and the current operation of the program.
Exit	Shut down the program.

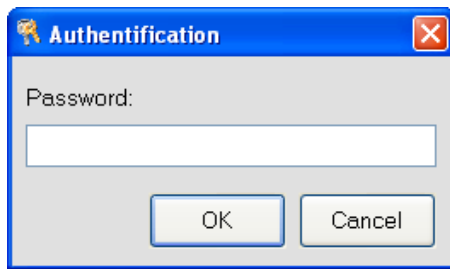
(Image Drive Info)



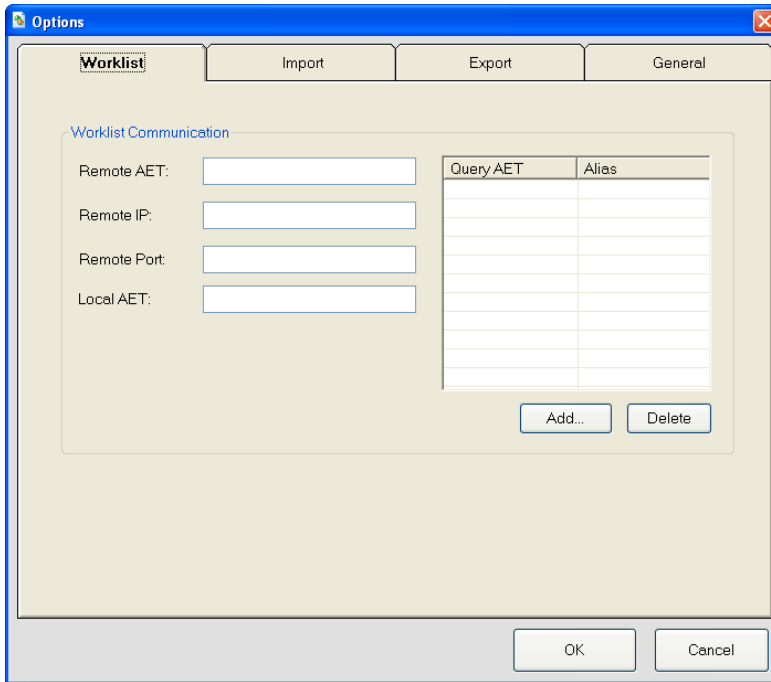
CONFIGURATION

The access of the configuration window is password protected, to avoid changes from 3rd persons.

The default password is "taeufer".



WORKLIST SETTINGS



Worklist Communication	
Remote AET	AET from the DICOM Worklist SCP.
Remote IP	IP or Hostname from the DICOM Worklist SCP.
Remote Port	Port value from the DICOM Worklist SCP.
Local AET	This value is used as the default AET, if no further AET is specified for the station AET.
Query AET/Alias	List of the configured station AETs for the DICOM Worklist request.
Add	Add another Query AET / Alias.
Delete	Delete selected Query AET/Alias.

IMPORT

Options

Worklist **Import** Export General

Local AET: DIMEX

Remote AET:

Remote Host/IP:

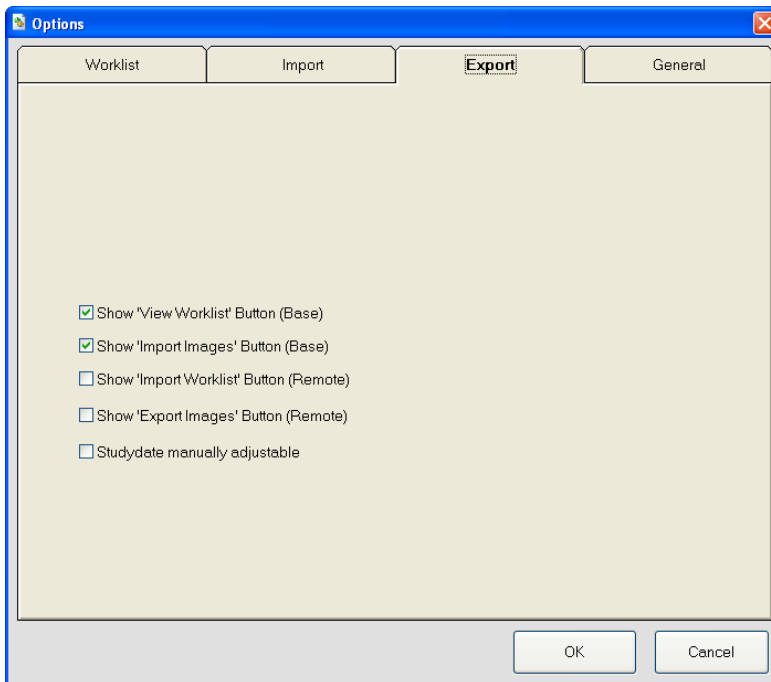
Remote Port: 0

Remove Image Icon Sequence (0088,0200)

OK Cancel

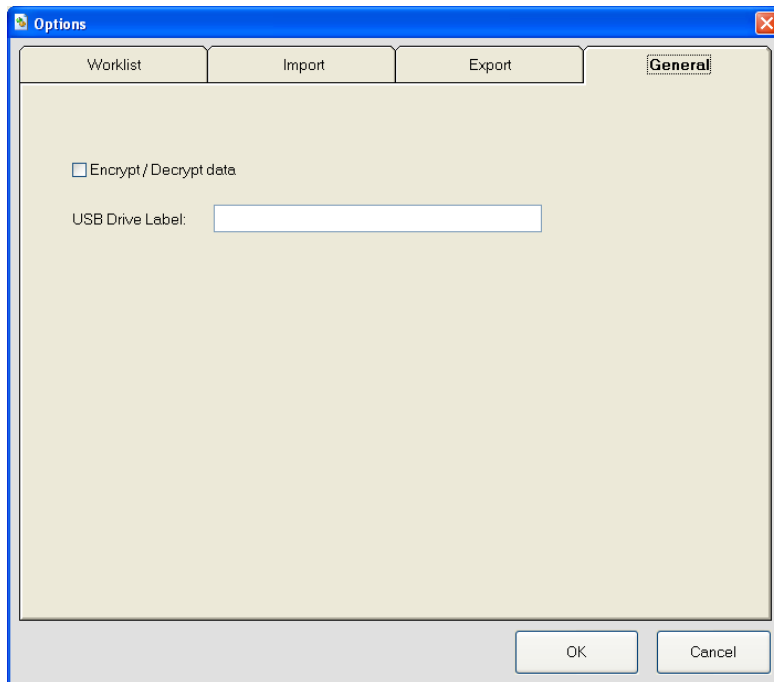
Local AET	AET to identify on the DICOM Store SCP.
Remote AET	AET of the DICOM Store SCP.
Remote Host / IP	IP or Hostname of the DICOM Store SCP.
Remote Port	Port value of the DICOM Store SCP.
Remove Image Icon Sequence (0088,0200)	Removes the Image Icon Sequence (0088,0200) on all images before sending them to the DICOM Store SCP.

EXPORT



Show “View Worklist” Button (Base)	Show / Hide the Export Worklist button in the main window. This option should be only used In Base configuration.
Show “Import Images” Button (Base)	Show / Hide the Import Images button in the main window. This option should be only used In Base configuration.
Show “Import Worklist” (Remote)	Show / Hide the Import Worklist button in the main window. This option should be only used In Remote configuration.
Show “Export Images” (Remote)	Show / Hide the Export Images button in the main window. This option should be only used In Remote configuration.
Studydate manually adjustable	Enable/Disable the date selection in the main window. By default (disabled) the query date is today + next 14 days.

GENERAL



Encrypt/Decrypt data	Enable/Disable data encryption/decryption of data read/written from the USB device.
USB Drive Label	Name of the USB device displayed in the windows explorer.