

DIMEX REMOTE

SETUP GUIDE

*Schäf Systemtechnik GmbH
Falkenstrasse 22
D-91580 Petersaurach
Germany
Phone: +49 (0) 9872 2002
Fax: +49 (0) 9872 2823
E-Mail: support@sstmed.com*

TABLE OF CONTENTS

| | |
|---|----|
| License Agreements | 3 |
| Disclaimer..... | 3 |
| Copyright..... | 4 |
| Hotline, Online-Support and Manual | 4 |
| Revision History..... | 5 |
| Audience | 5 |
| Definitions, Terms and Abbreviations..... | 5 |
| General..... | 6 |
| Functionality..... | 6 |
| System Requirements | 6 |
| Main User Interface | 8 |
| Configuration | 10 |
| Export..... | 11 |
| General..... | 12 |

LICENSE AGREEMENTS

DISCLAIMER

1. In no event Schäf Systemtechnik GmbH be liable for any damage or loss arising from fire, earthquake, any action or accident by a third party, any international or negligent action by the user, any trial usage, or other usage under abnormal conditions.
2. In no event will Schäf Systemtechnik GmbH be liable for direct or indirect consequential damage arising out of the use or unavailability of this product.
Schäf Systemtechnik GmbH will not be liable for loss of image data due to any reason.
3. In no event shall Schäf Systemtechnik GmbH be liable for personal physical harm or property damage ths is sustained when the instructions are not followed or the product is misused.
4. It is the responsibility of the attending physicians to provide medical care services. Schäf Systemtechnik GmbH will not be liable for the faulty diagnosis.
5. Roentgenography, image processing, image reading, and image data storage must be performed in accordance with the laws of the country or region in which the product being used.
The user is responsible for maintaining the privacy of the image data.
6. Information in this manual may change without prior notice.
7. We've taken all possible means to ensure the content accuracy of this manual. If you have any questions or problems, contact your local dealer.

COPYRIGHT

1. All rights reserved.
2. Under copyright laws, this manual may not be reproduced, in whole or in part, without the written permission of Schäf Systemtechnik GmbH.

HOTLINE, ONLINE-SUPPORT AND MANUAL

If you have further questions about usage and/or functionality of this software product, then please feel free to contact our service personal.

Phone-Hotline +49 (0) 9872 / 2002

Fax-Hotline +49 (0) 9872 / 2823

Internet address:

<http://www.sstmed.com>

service@sstmed.com

REVISION HISTORY

- Revision 1.1 Franco 2014-11-27 Draft for official review

AUDIENCE

This document is intended for health system integrators or implementers.

DEFINITIONS, TERMS AND ABBREVIATIONS

- AE Application Entity
- CR Computed Radiography
- DICOM Digital Imaging and Communications in Medicine
- MG Mammography
- SCP Service Class Provider
- SCU Service Class User
- TCP/IP Transmission Control Protocol
- UID Unique Identifier

GENERAL

FUNCTIONALITY

- DICOM Worklist SCU
- DICOM Store
- DICOM Send
- GDT Worklist Export/Import
- File encryption/decryption

SYSTEM REQUIREMENTS

The software supports the following operation systems:

- Microsoft Windows 2000/XP Professional
- Microsoft Windows 7 32-Bit Professional

INSTALL

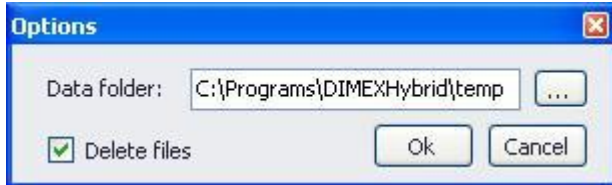
1. Install windows XP update:
 - i. English version: <http://download.sstmed.com/DIMEXHybrid/ServiceUpdates/WindowsXP-KB932716-v2-x86-ENU.exe>
 - ii. German version: <http://download.sstmed.com/DIMEXHybrid/ServiceUpdates/WindowsXP-KB932716-v2-x86-DEU.exe>
2. Install SSTBurn
 - i. Download software from: <http://download.sstmed.com/DIMEXHybrid/SSTBurn.rar>
 - ii. Run Setup.exe and install SSTBurn.
3. Install Dimex Remote
 - i. Download software from: http://download.sstmed.com/DIMEXHybrid/DIMEXHybrid1.0.32-Setup_Hologic.exe

SSTBURN MAIN USER INTERFACE



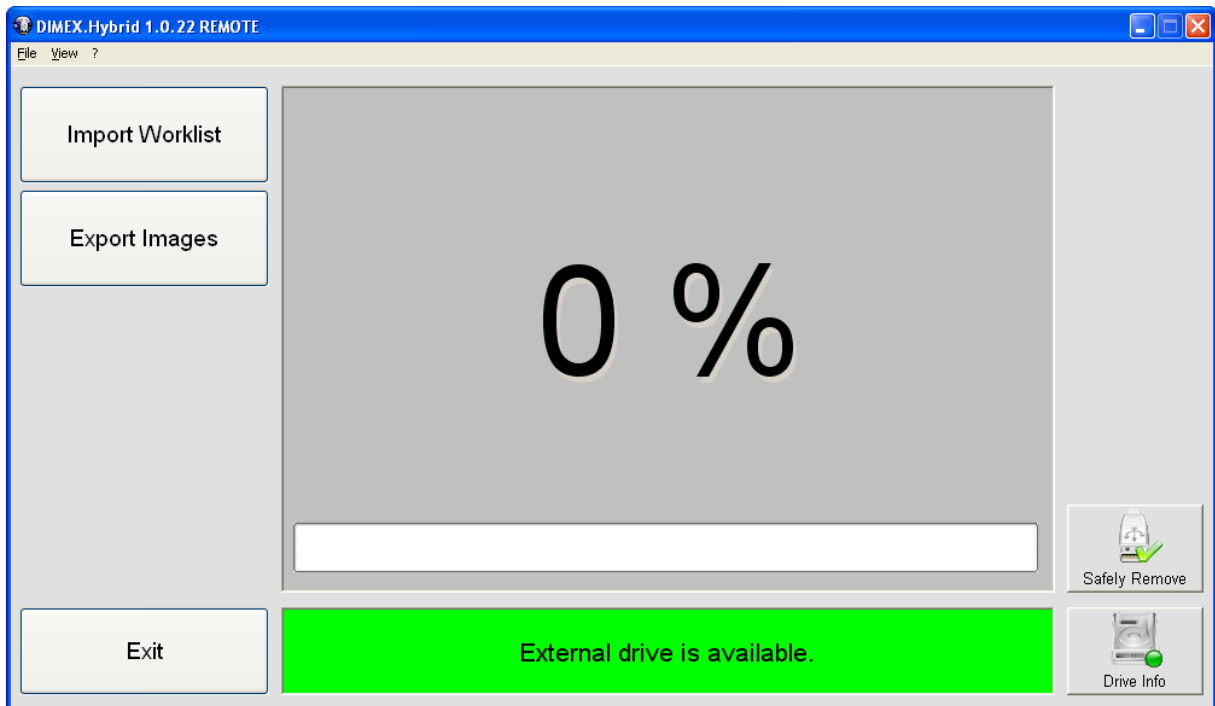
| | |
|--------------------|--|
| Volume Name | Name of the Volume to be burned. |
| Burn | Start burning Process |
| Device | Burning device being used. |
| Cancel | Cancel current process and exit program. |

SSTBURN CONFIGURATION



| | |
|---------------------|--|
| Data Folder | Path to the folder where the data is stored. (temp folder in the Dimex hybrid installation folder) |
| Delete files | Delete files after burning process is completed(Active) |

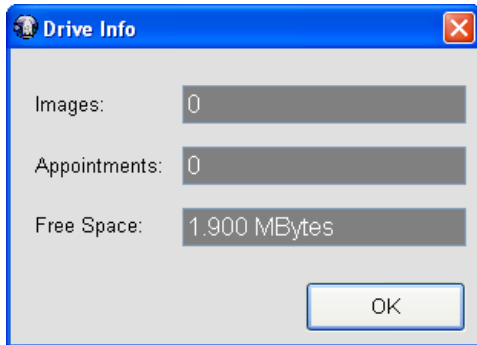
DIMEX REMOTE MAIN USER INTERFACE



| | |
|------------------------|---|
| Import Worklist | Reads the available appointment files from the USB device and moves them to the specified import directory. The import directory is specified in the variostorage |
|------------------------|---|

| | |
|----------------------|--|
| | application. |
| Export Images | Writes the retrieved image data to the specified USB device. |
| Safely Remove | Removes the configured USB device safely from the windows os. |
| Drive Info | Shows a simple overview of the content and free space left on the USB device (see image drive info). |
| Status window | Shows the status of the USB device and the current operation of the program. |
| Exit | Shut down the program. |

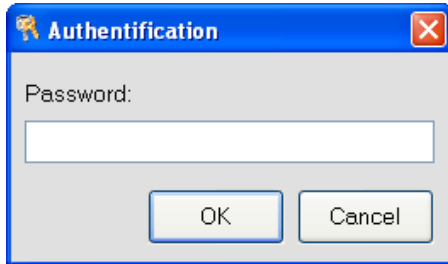
(Image Drive Info)



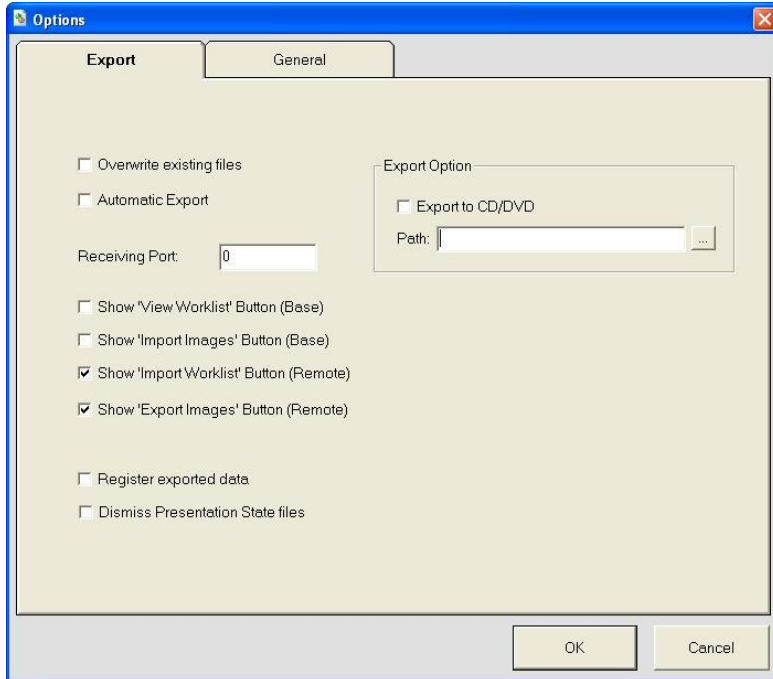
CONFIGURATION

The access of the configuration window is password protected, to avoid changes from 3rd persons.

The default password is "taeufer".

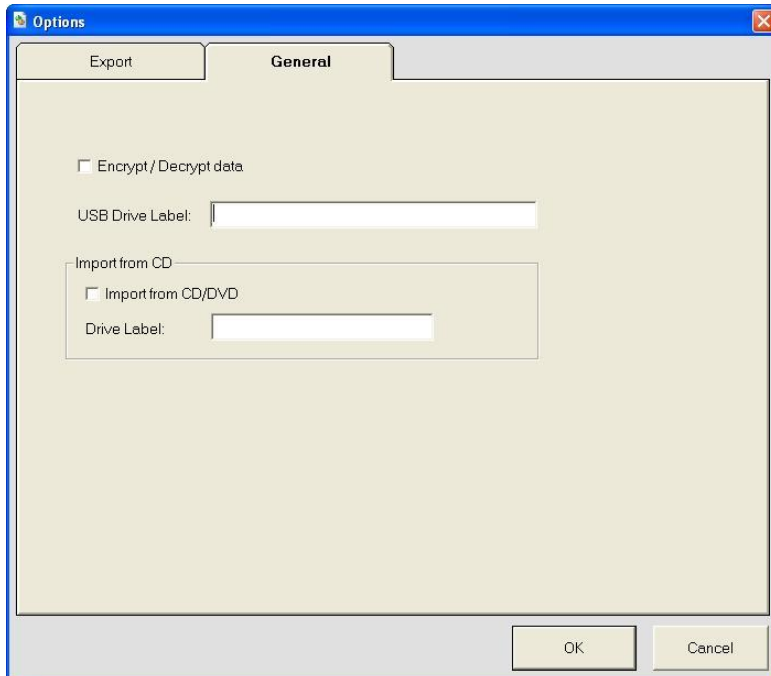


EXPORT



| | |
|---|--|
| Overwrite existing files | Existing files on the USB device will be overwritten in case of equal file names. |
| Automatic Export | Retrieved image data will be written immediately on the USB device. |
| Receiving Port | Port value where the application is retrieving images. Images will be accepted from any Dicom node. |
| Show "View Worklist" Button (Base) | Show / Hide the Export Worklist button in the main window. This option should be only used In Base configuration. |
| Show "Import Images" Button (Base) | Show / Hide the Import Images button in the main window. This option should be only used In Base configuration. |
| Show "Import Worklist" (Remote) | Show / Hide the Import Worklist button in the main window. This option should be only used In Remote configuration. |
| Show "Export Images" (Remote) | Show / Hide the Export Images button in the main window. This option should be only used In Remote configuration. |
| Register exported data | The Patient Names and Image Count is registered in a database, which can be queried by the user to get a overview what was already send to the USB device. |
| Export to CD/DVD | Enable/Disable export to CD/DVD. |
| Path | Path to the SSTBurn.exe file |

GENERAL



| | |
|-----------------------------|---|
| Encrypt/Decrypt data | Enable/Disable data encryption/decryption of data read/written from the USB device. |
| USB Drive Label | Name of the USB device displayed in the windows explorer. |
| Import from CD/DVD | Enable/Disable data Import from CD/DVD. |
| Drive Label | Label of the CD/DVD device. (Ex. D:\) |